

# adelphi bakes

---

*Taste our passion  
for cake*





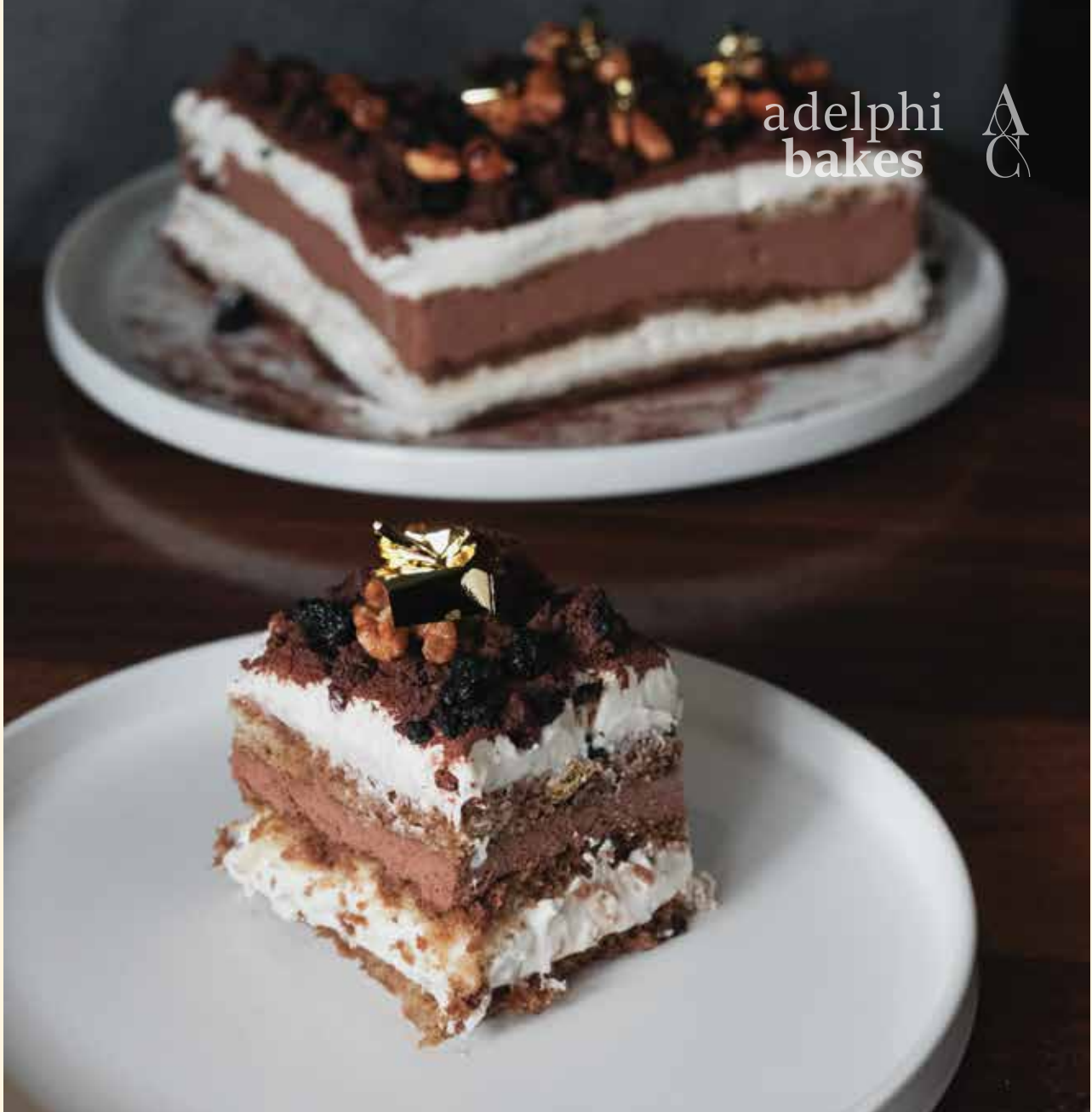
## Toffee Dates Cake | RM120\*

This is an earthy cake filled with highly nutritious red dates infused sponge cake and topped with crunchy mix caramelised nuts and dried dates.

Ingredients: Toffee Whipped Cream, Red Dates Sponge Cake,  
Mix Caramelised Nuts & Dried Dates.

Weight: 1.3kg

\*Preorder 3 days in advance | Keep refrigerated | The above prices quoted are subject to 6% SST



## Baileys Rum Tiramisu | RM120\*

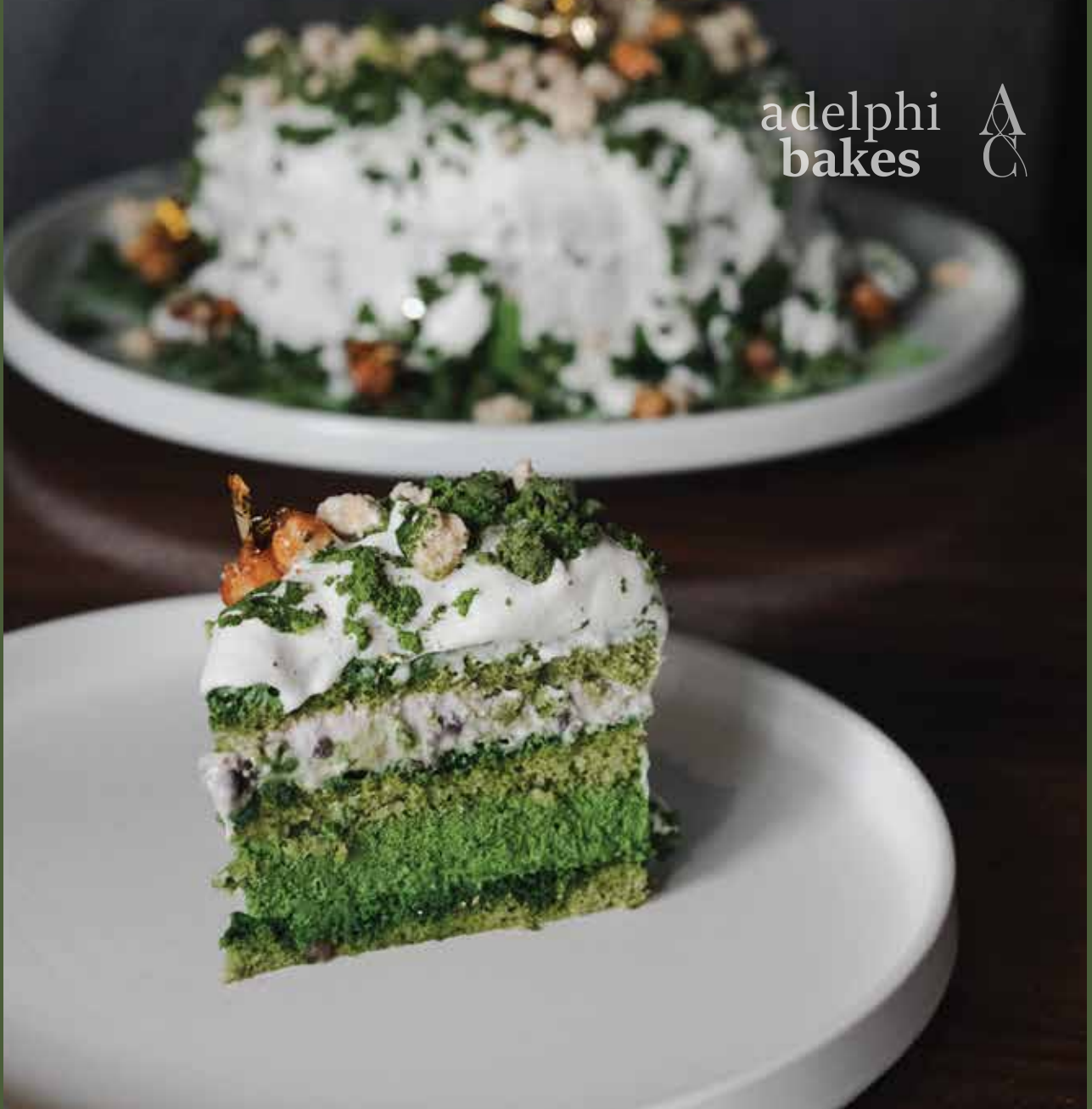
Classic tiramisu infused with Baileys Irish cream and rum, a combination that's hard to resist.

Ingredients: Baileys, Bacardi White Rum, Coffee, Callebaut Crumble, Charcoal Vanilla Crumble, Nuts, Cream, Edible Gold Flakes.

Weight: 1.3kg

\*Pre-order 3 days in advance | Keep refrigerated | The above prices quoted are subject to 6% SST

adelphi  
bakes



## Matcha Red Bean Tiramisu | RM120\*

Classic tiramisu with Japanese twist. Matcha soaked sponge cake, layered with a light and creamy filling and homemade sweet adzuki paste.

Ingredients: Matcha, Adzuki, Matcha Crumble, Milk Crumble, Cream, Nuts, Edible Gold Flakes.

Weight: 1.3kg

\*Pre-order 3 days in advance | Keep refrigerated | The above prices quoted are subject to 6% SST



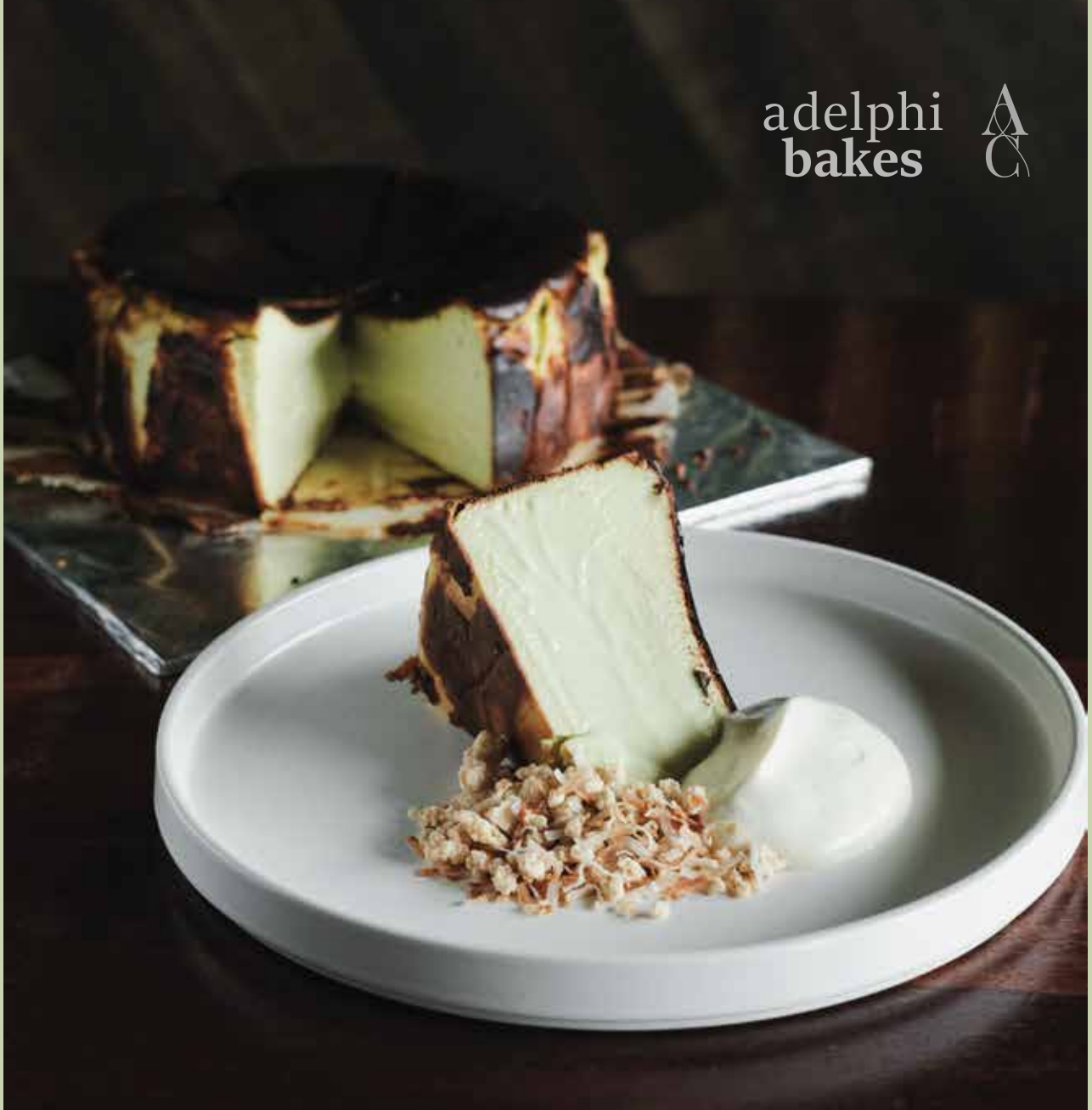
## Basque Burnt Cheesecake | RM120\*

Rich and creamy burnt cheesecake, comes with homemade charcoal vanilla crumble & mix berries compote.

Ingredients: Eggs, Cream, Cream Cheese.

Weight: 1.5kg

\*Available daily | Keep refrigerated | The above prices quoted are subject to 6% SST



## Pandan Burnt Cheesecake | RM120\*

The Pandan Burnt Cheesecake has a refreshing taste, especially when paired with our light coconut whipped cream and white chocolate crumble.

Ingredients: Eggs, Cream, Cream Cheese, Pandan.

Weight: 1.5kg

\*Available daily | Keep refrigerated | The above prices quoted are subject to 6% SST